

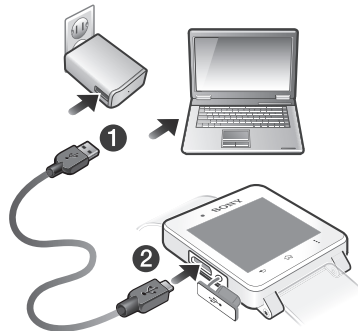


## Basics

### Charging

Before using your SmartWatch 2 for the first time, you need to charge it for approximately 30 minutes. Sony chargers/USB cables are recommended.

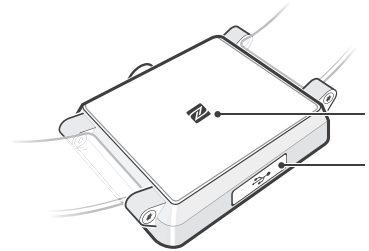
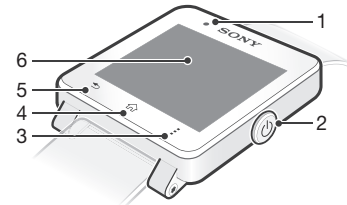
#### To charge your SmartWatch 2



- 1 Plug one end of the USB cable into the charger or into the USB port of a computer.
- 2 Plug the other end of the cable into the Micro USB port of your SmartWatch 2.

! A charger may not be included at purchase in all markets.

## Overview



- |                 |                               |
|-----------------|-------------------------------|
| 1. Light sensor | 5. Back key                   |
| 2. Power key    | 6. Touchscreen                |
| 3. Actions key  | 7. NFC detection area         |
| 4. Home key     | 8. Port for charger/USB cable |

## Turning on and off

### To turn on your SmartWatch 2

- Press and hold down the power key until the display turns on.

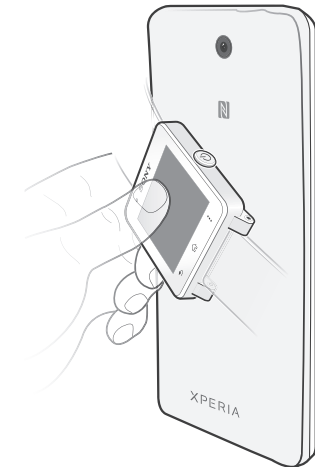
### To turn off your SmartWatch 2

- When the display is active, press and hold down the power key until the display turns off.

## Setting up your SmartWatch 2

The quickest way to get started with your SmartWatch 2 is by connecting it to your device using NFC. If your device does not support NFC, you can connect manually.

### Setting up using NFC



! To save data costs, make sure that your device is connected to a Wi-Fi® network.

- 1 **Device:** Make sure that the NFC function is turned on and that the screen is active and unlocked.
- 2 **SmartWatch 2:** Turn on your SmartWatch 2.
- 3 If the Smart Connect application is not pre-installed on your device, place the device over the back of your SmartWatch 2 so that the NFC detection area of each device touches each other. Then follow the instructions that appear on the device's

screen to install the Smart Connect application from Google Play™.

- 4 One-touch pair and connect by placing the device over the back of your SmartWatch 2 so that the NFC detection area of each device touches each other.
- 5 **Device:** Accept the pairing request from SmartWatch 2.
- 6 **Device:** Follow the instructions to install the SmartWatch 2 application from Google Play™. Then SmartWatch 2 restarts automatically to finish setting up.

## Setting up manually

If your device does not support NFC, you can connect manually using Bluetooth® function.

### To set up using the Bluetooth® function

- ! To save data costs, make sure that your device is connected to a Wi-Fi® network.
- 1 **Device:** Make sure that you have the Smart Connect application, which is available on Google Play™, installed on your device.
  - 2 **Device:** Make sure that the Bluetooth® function is turned on.
  - 3 **SmartWatch 2:** Turn on your SmartWatch 2.
  - 4 **Device:** Scan for Bluetooth® devices, then select SmartWatch 2 in the list of available devices.
  - 5 **Device:** Accept the pairing request from SmartWatch 2.
  - 6 **Device:** Follow the instructions to install the SmartWatch 2 application from Google Play™. SmartWatch 2 restarts automatically when the application is installed.


## Getting to know your SmartWatch 2

You can use your SmartWatch 2 as a regular watch and access most applications when it is not connected to a device. When it is connected, you get a richer set of functions.

### Installing extra applications

Install extra applications via the Smart Connect application on the Android™ device to optimise the functionality of your SmartWatch 2.

### To install an extra application

- 1 **SmartWatch 2:** Find and tap the App recommender icon .
- 2 **SmartWatch 2:** Select an application in the list of recommended applications, then tap **View & install**.
- 3 **Device:** When Google Play™ opens, tap **install**.
- 4 **Device:** Follow the instructions that appear on the screen to install the application that you selected. An icon of the application shows on the screen of SmartWatch 2 after the installation is completed.

### Support on the web



Visit [www.sonymobile.com/support](http://www.sonymobile.com/support) to get the most from your accessory, including Troubleshooting and a User guide for your SmartWatch 2.

### Sony SW2

Prior to use, please read the *Important information* leaflet separately provided.



This User guide is published by Sony Mobile Communications AB or its local affiliated company, without any warranty. Improvements and changes to this User guide necessitated by typographical errors, inaccuracies of current information, or improvements to programs and/or equipment, may be made by Sony Mobile Communications AB at any time and without notice. Such changes will, however, be incorporated into new editions of this User guide.

All rights reserved.

©Sony Mobile Communications AB, 2013

Publication number: 1276-5962.2

Interoperability and compatibility among Bluetooth® devices varies.

Device generally supports products utilizing Bluetooth spec. 1.2 or higher, and Headset or Handsfree profile.

Sony is the trademark or registered trademark of Sony Corporation. Bluetooth is the trademark of the Bluetooth (SIG) Inc. and is used under license. All other marks are the property of their respective owners. All rights reserved.

All product and company names mentioned herein are the trademarks or registered trademarks of their respective owners. Any rights not expressly granted herein are reserved. All other trademarks are property of their respective owners.

Visit [www.sonymobile.com](http://www.sonymobile.com) for more information.

All illustrations are for illustration only and may not accurately depict the actual accessory.

## Declaration of Conformity for SW2

We, Sony Mobile Communications AB of Nya Vattentorget SE-221 88 Lund, Sweden declare under our sole responsibility that our product **Sony type RD-0050** and in combination with our accessories, to which this declaration relates is in conformity with the appropriate standards EN 300 328:V1.7.1, EN 301 489-17:V2.1.1, EN 301 489-3:V1.4.1 and EN 60 950-1:2006 +A11:2009+A1:2010 following the provisions of, Radio Equipment and Telecommunication Terminal Equipment directive 1999/5/EC.

Lund, July 2013

CE 0682

Anders Grynge

*Director, Head of Global Type Approval*  
We fulfil the requirements of the R&TTE Directive (1999/5/EC).

### FCC Statement

This device complies with Part 15 of the FCC rules. Operation is subject to the following two conditions: (1) This device may not cause harmful interference, and (2) This device must accept any interference received, including interference that may cause undesired operation.



Any change or modification not expressly approved by Sony may void the user's authority to operate the equipment.

This equipment has been tested and found to comply with the limits for a Class B digital device, pursuant to Part 15 of the FCC Rules. These limits are designed to provide reasonable protection against harmful interference in a residential installation. This equipment generates, uses and can radiate radio frequency energy and, if not installed and used in accordance with the instructions, may cause harmful interference to radio communications. However, there is no guarantee that interference will not occur in a particular installation.

If this equipment does cause harmful interference to radio or television reception, which can be determined by turning the equipment off and on, the user is encouraged to try to correct the interference by one or more of the following measures:

- Reorient or relocate the receiving antenna.
- Increase the separation between the equipment and receiver.
- Connect the equipment into an outlet on a circuit different from that to which the receiver is connected.
- Consult the dealer or an experienced radio/TV technician for help.

### Industry Canada Statement

This device complies with RSS-210 of Industry Canada. Operation is subject to the following two conditions: (1) this device may not cause interference, and (2) this device must accept any interference, including interference that may cause undesired operation of the device. This Class B digital apparatus complies with Canadian ICES-003. Cet appareil numérique de la classe B est conforme à la norme NMB-003 du Canada.

### Avis d'industrie Canada

Le présent appareil est conforme aux CNR d'Industrie Canada applicables aux appareils radio exempts de licence. L'exploitation est autorisée aux deux conditions suivantes: (1) l'appareil ne doit pas produire de brouillage, et, (2) l'utilisateur de l'appareil doit accepter tout brouillage radioélectrique subi, même si le brouillage est susceptible d'en compromettre le fonctionnement.