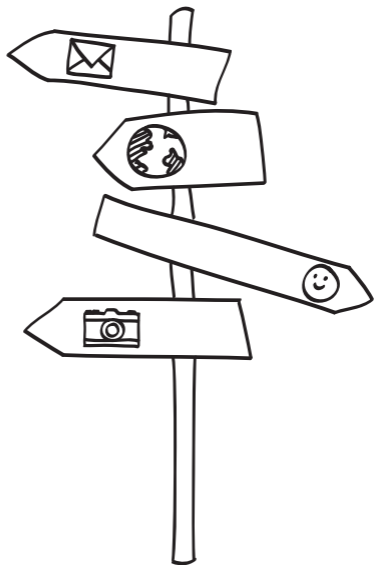


Your **HTC** Media Link HD

User guide



This user guide will help you get started with your HTC Media Link HD.

Please also read the Safety and regulatory guide that's included in the box.

Contents

What's in the box	3
Getting to know your Media Link HD	3
Setting up Media Link HD	5
Getting Media Link HD to recognize your phone	7
Sharing on a big screen	8
Changing Media Link HD settings	9
Keeping your Media Link HD updated	10
Resetting your Media Link HD	11
Helpful tips	12
Specifications	14
Trademarks and copyrights	15

What's in the box

Here's what you should find when you open the box:

- HTC Media Link HD
- Power adapter
- microUSB cable
- HDMI cable
- This user guide
- Safety and regulatory guide

Important Use HTC original accessories with your Media Link HD.

Getting to know your Media Link HD

Do you have a crowd of people squinting to watch that cool video on your phone? Use Media Link HD to wirelessly show the video on your big screen TV. Share photos and music, too.

Before using Media Link HD, make sure that you have:

- HTC One X / HTC One S / HTC One V / HTC One XL / HTC EVO™ 4G LTE / Droid Incredible 4G LTE by HTC
- a TV with an HDMI® port

Disclaimer Some content providers restrict the use of their content. You should always respect the terms of use of any content you intend to display on a TV using Media Link HD. If you try to play content using Media Link HD which you are not allowed to display on a TV, the content may not be displayed properly or at all.

Here's what Media Link HD looks like from the top, front and bottom.

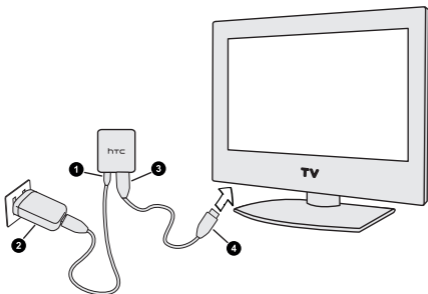


- The PBC (Push Button Configuration) button only needs to be used if you need to reconfigure the network settings on your Media Link HD.
- The microUSB port is only used for supplying power to Media Link HD.
- The HDMI port connects Media Link HD to your TV.

Setting up Media Link HD

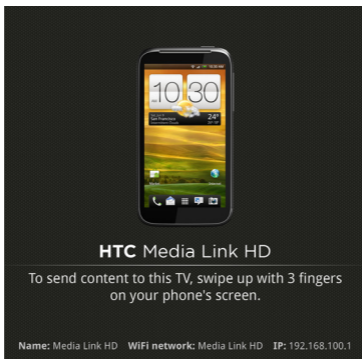
Connecting Media Link HD to your TV

1. Use the supplied microUSB cable to connect the power adapter to Media Link HD.
2. Plug in the power adapter to an electrical outlet.
3. Connect the supplied HDMI cable to the HDMI port on the bottom side of your Media Link HD.
4. Connect the other end of the HDMI cable to your TV.



5. On your TV, make sure you have selected the correct HDMI input in your TV's input settings.

You'll then see the Media Link HD screen on your TV.



Connecting your phone to your home network

Connect your phone to your home network through your phone's Wi-Fi settings. Refer to your phone's user manual to find out how to set up a Wi-Fi connection.

Note Peer-to-peer connection will be used in the following situations:

- A Wi-Fi router is unavailable or inaccessible.
- IP multi-casting is blocked on the network.

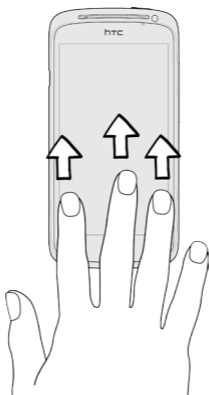
Tip Your Media Link HD will have better performance if the Wi-Fi signal is strong.

Getting Media Link HD to recognize your phone

Important Make sure your Media Link HD is already on and connected to your TV.

When connecting to Media Link HD for the first time, simply swipe three fingers in an upwards direction on your phone. Media Link HD will then automatically configure itself.

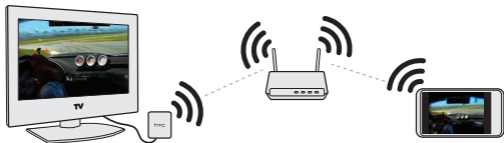
Whenever you want to share on your TV, you'll only have to swipe up with three fingers to connect your phone to Media Link HD. To stop sharing, simply swipe down with three fingers.



Sharing on a big screen

Use your Media Link HD to share your movies, photos, and videos with your family and friends.

1. Connect your phone to Media Link HD using the three finger swipe.
2. Then start using the app that you want to share from.



While playing movies from HTC Watch or viewing photos and videos in Gallery, you can also check your email, chat with friends, browse the web and more.

Changing Media Link HD settings

Switching to another language

Prefer to see the onscreen text in a different language? You can change the language that is displayed on the TV screen.

1. On your phone, slide open the Notifications panel.
2. Tap **Settings > More > Media Link HD**.
3. Select your Media Link HD device.
4. Tap **Advanced settings**.
5. Select the language you want and then tap **Save**.

Note **Advanced settings** is only accessible when the following two conditions are met.

1. Your Media Link HD is listed under “Available devices” in **Settings > More > Media Link HD**.
2. Your Media Link HD is set to “Off” in **Settings > More > Media Link HD**.

Changing to a new Wi-Fi router

If you changed to a new Wi-Fi router, simply connect your phone to it. Media Link HD will automatically connect to the new Wi-Fi router.

But if you're also trying to connect to Media Link HD with another phone, you'll be asked to press the PBC button on Media Link HD to start the auto-configuration process.

Keeping your Media Link HD updated

Your Media Link HD automatically checks for firmware updates regularly. The firmware is downloaded and installed when you are not actively using Media Link HD.

Note For your Media Link HD to automatically check for firmware updates, it needs to have Internet access through your Wi-Fi router.

You can also manually check for updates in **Advanced settings**.

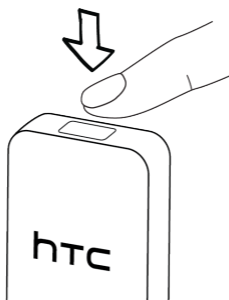
1. On your phone, slide open the Notifications panel.
2. Tap **Settings > More > Media Link HD**.
3. Select the Media Link HD device you want to update.
4. Tap **Advanced settings > Check for updates**.

If there are any updates available, your Media Link HD will automatically start the update process.

Resetting your Media Link HD

If you ever have problems connecting to your Media Link HD, you can reset it to its factory default settings. Resetting your Media Link HD will delete all of your saved network connection data.

To do a factory reset, press and hold the PBC button on the top of Media Link HD for about 10 seconds. Once completed, Media Link HD will restart.



Helpful tips

If you ever have any problems using Media Link HD, here are some things you can do to set things right again.

Still seeing a blank screen after connecting Media Link HD to your TV?

Check if the HDMI cable is properly connected to the device and to your TV.

Check if you have selected the correct HDMI input as your TV's input setting.

Can't connect Media Link HD to your Wi-Fi router?

Check if your phone has the correct network connection.

1. On the Home screen, slide open the Notifications panel, and then tap **Settings**.
2. Tap **Wi-Fi**, and check if Wi-Fi is enabled.
3. Check if you are connected to your home network.

Be sure that you are not trying to connect to a network that blocks IP multicasting or requires a security certificate.

Make sure your phone and Media Link HD are close enough to a Wi-Fi router. Also, try to avoid areas that have a lot of noise or interruption from surrounding wireless signals.

Use a Wi-Fi router that supports 802.11a/g/n for better connection performance.

Can't make the three finger gesture work?

1. On the Home screen, slide open the Notifications panel, and then tap **Settings**.
2. Tap **Display & gestures**.
3. Check if **HTC Gestures** is enabled.

What does that LED color mean?

A solid blue light indicates that Media Link HD is in active state.

An alternating blue and red light indicates that Media Link HD is being configured by a phone.

A flashing red light indicates that Media Link HD is starting up.

A solid red light indicates that Media Link HD is in standby state.

Can't connect to your Wi-Fi router and Media Link HD at the same time?

Media Link HD isn't compatible with DFS (Dynamic Frequency Selection). In the 5 GHz mode, it is compatible with Band 1 (5.150 - 5.250 GHz) and Band 4 (5.725-5.850 GHz). If your Wi-Fi router has been set up using DFS, Media Link HD won't be able to connect to your Wi-Fi router. Instead, it will directly connect to your phone and prevent your phone from connecting to the Wi-Fi router.

If you still want Media Link HD to connect to your Wi-Fi router, refer to the documentation that comes with your Wi-Fi router for other methods of setting up a Wi-Fi router.

Check for additional updates and useful tips on our website: www.htc.com/support.

Specifications

Dimensions (LxWxT)	84.0 x 52.0 x 12.2 mm
Supported Video Formats	AVI, MP4, MOV, 3GP, MKV, H.264 BP/MP/HP
Supported Audio Formats	MP3, WAV, WMA, AAC
Supported Image Formats	JPG
Connectivity	HDMI port Wi-Fi IEEE 802.11 a/b/g/n micro-USB port for power

Trademarks and copyrights

Copyright © 2012 HTC Corporation. All Rights Reserved.

The HTC logo, the HTC quietly brilliant logo are trademarks and/or service marks of HTC Corporation.

Wi-Fi is a registered trademark of the Wireless Fidelity Alliance, Inc.

DLNA and the DLNA disc logo are trademarks or registered trademarks of Digital Living Network Alliance.

All other company, product and service names mentioned herein are trademarks, registered trademarks or service marks of their respective owners.

HTC shall not be liable for technical or editorial errors or omissions contained herein, nor for incidental or consequential damages resulting from furnishing this material. The information is provided “as is” without warranty of any kind and is subject to change without notice. HTC also reserves the right to revise the content of this document at any time without prior notice.

No part of this document may be reproduced or transmitted in any form or by any means, electronic or mechanical, including photocopying, recording or storing in a retrieval system, or translated into any language in any form without prior written permission of HTC.



91H0xxxx-xxM Rev.A