

AwoX CamLIGHT™

Wireless HD Video Camera & LED Light

User Guide

Contents

Introduction	3
Getting started	5
Using your CamLIGHT	8
Sharing cameras.....	11
CamLIGHT settings	12
Troubleshooting.....	14

© 2015 AwoX. All rights reserved. AwoX CamLIGHT, the AwoX logo and other AwoX marks are owned by AwoX. iPhone, iPad, and iPod are trademarks of Apple, Inc., registered in the U.S and other countries. Android is a trademark of Google Inc. All other trademarks are the property of their respective owners. Smartphone or tablet device sold separately. This is a non-contractual document. Read provided safety information before using this product.

Rev 01 (EU)

Introduction

Welcome

Congratulations and thank you for choosing AwoX CamLIGHT™. This product contains both a wireless HD video camera and a low-energy LED light bulb. Use your smartphone to check in on your home or office and to control the camera and light.

- Access and share your camera(s) remotely via secure AwoX cloud ⁽¹⁾
- Use the free AwoX camera software for your iPhone®, iPad®, iPod touch®, or Android smartphone or tablet.⁽²⁾

⁽¹⁾ Requires Internet connection. ⁽²⁾ Download the free AwoX CamLIGHT™ software for your Apple or Android OS device.

Product features

- WiFi enabled, motorized HD video camera (720 p)
- Low-energy LED light bulb
- Share cameras with other users
- Micro SD memory card slot (up to 32 GB, card not included)
- Automatic night vision infrared light
- Capture still images and video
- Speak or listen in on the room
- Rotate camera image on your mobile device

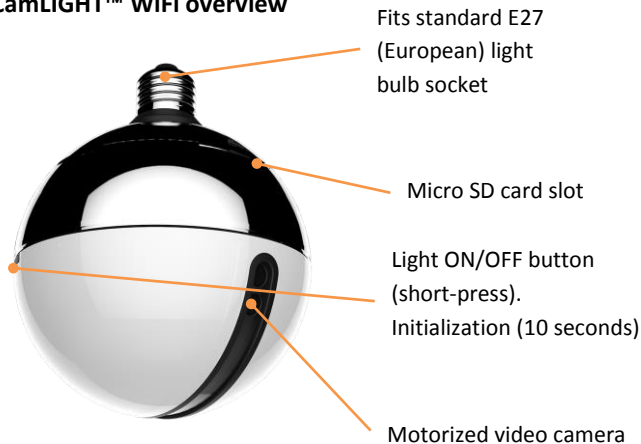
What's in the box

- AwoX CamLIGHT™ WiFi light bulb with camera
- This user guide
- Safety and warranty leaflet

What else you need

- WiFi/Internet connection for local use
- Internet data access on your smartphone for remote use
- A supported smartphone or tablet running AwoX CamLIGHT (available for free on mobile app stores)

CamLIGHT™ WiFi overview



Getting started

1. Download the free AwoX CamLIGHT app for smartphone or tablet:

**Apple
iPhone,
iPad, iPod
touch**



Download and install AwoX CamLIGHT™ software from the App Store.

**Google
Android
devices**



Download and install AwoX CamLIGHT™ software from the Google Play Store.

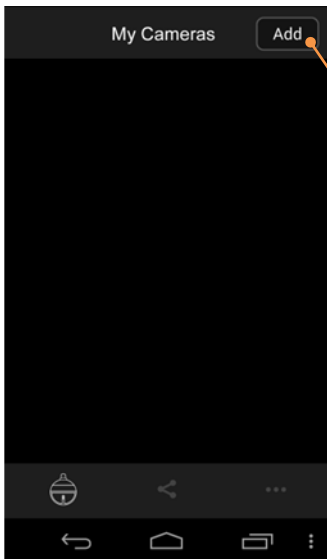
On your Apple or Android device, make sure WiFi is turned on and then use the mobile device's settings to connect to your home network. These instructions here are identical for both operating systems.

2. Screw your AwoX CamLIGHT into a light socket and turn on the power. The light turns on.
Note: Do not use dimmer switches with this product.
3. Tap the CamLIGHT application icon on your mobile device.
4. The first time you run the application, tap on **Sign up** for the free AwoX cloud service. This service enables you to access your video camera remotely and to share cameras with other users. Fill in the **User name**, **Password**, and **E-mail** fields → Tap the checkbox to **Agree to terms of use**. → Tap on **Submit** in the upper right-hand corner.

The next time you use CamLIGHT, simply enter your **User name** and **Password** and then tap on **Done**.

Note: If you forget your password, tap on Forgot Password and your password will be sent to you by e-mail

5. The **My Cameras** screen opens, without any cameras present the first time you run the application.



Tap on **Add** and follow the instructions on the screen.

You may either tap on Scan QR code for enter the camera ID number directly to begin configuring your AwoX CamLIGHT.

Configuring your camera

Option 1: Scan the QR code on your product:

1. Tap on **Add** in the My Cameras → **QR code**
2. Use the device screen to scan the QR code sticker on your CamLIGHT product or on the back of this guide.
3. As soon as the QR code is identified, the product's ID number is automatically placed in the **ID** field → **Next**
4. Enter a name for your camera and tap **Next**

Option 2: Enter the product ID manually:

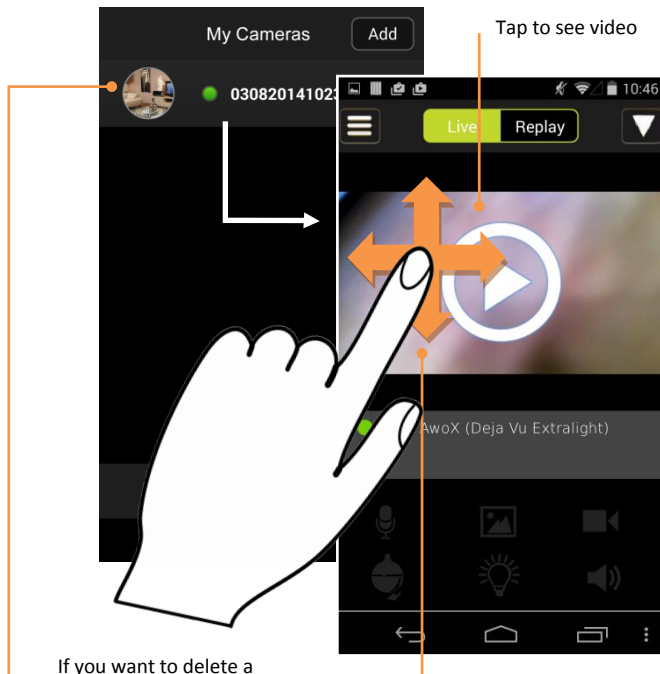
1. Alternatively, you may tap on **ID**
2. Enter the ID number manually and tap **Done**.
3. Enter a name for your camera and tap **Next**

Adding your camera to your home WiFi network

1. Tap **Scan QR code** → Choose the WiFi network for your camera → Enter the network password → **Next**
2. Press the button on your CamLIGHT for 10 seconds. The light will turn off and a small LED will blink red.
3. Follow the instructions on your device's screen until a QR code is displayed.
4. Hold your device's screen in front of the CamLIGHT camera, at a distance of 6 – 12 inches (15 – 30 cm). You will hear an audio message confirming when CamLIGHT recognizes the QR code and connects directly to your WiFi network (you may need to activate WiFi pairing on your router).
5. Tap on **Next**. When you see your camera's details on the screen, tap on **Submit**.

Using your CamLIGHT

Tap on your camera in the list, then tap on image to access features. Swipe screen with a finger to rotate camera view.

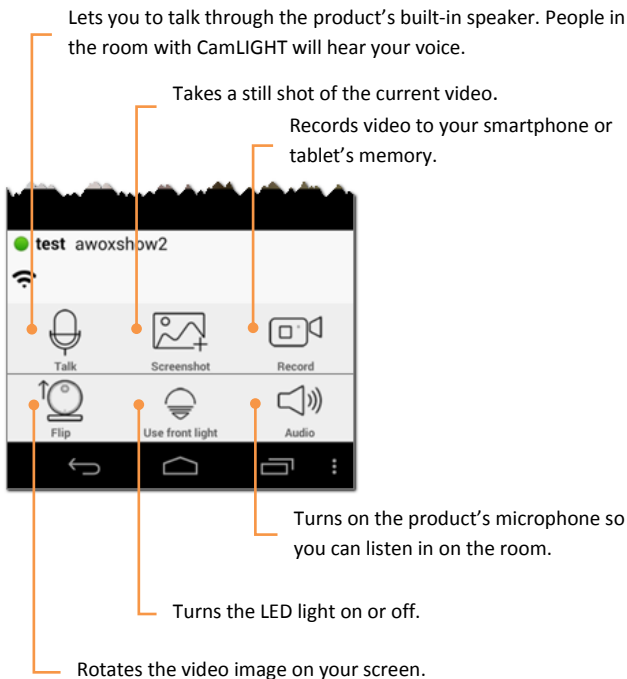


If you want to delete a camera, long-press its line and select delete.

Swipe right, left, up or down to use camera motors and change view, or pinch to zoom in/out.

Main application features

The six icons in the lower part of the screen are activated when you view a video stream from your camera or a shared camera.



Talk, record, audio, and light features

These four features are simple on/off options. Their icons indicate whether they are active or not. Press to activate, press again to deactivate.

With the **Record** option, you may store the video stream directly to your smartphone or tablet.

Flipping the video image

Depending on how your light is installed, you may wish to flip the video image for easier viewing. Press the icon to flip the image, press again to restore to the original view.

Taking a screenshot

When you tap on the screenshot icon, CamLIGHT takes a snapshot of the current video frame. You may choose one of these two options to save or send the image:



Sends the image to various destinations, depending on your configuration



Saves the image to your device's local image gallery.

Live or recorded video playback

- At the top of the screen, tap on **Live** to see live-action footage from your camera.
- Tap on **Replay** to choose the date and time to view video stored on your CamLIGHT's SD card. New video overwrites old video when the memory card is full.

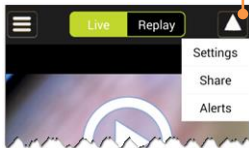
Sharing cameras

Sharing your camera with other users

With CamLIGHT, you can share your camera(s) with an unlimited number of other users. To publish your camera(s) to one or more specific users:

Tap on the triangle

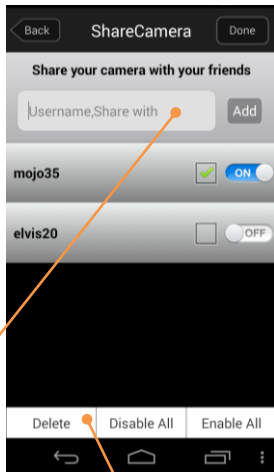
→ **Share**



Enter the name of a user you would like to share with → tap on **Add**.

You may add as many users here as you want.

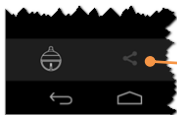
Activate sharing using the **ON/OFF** toggle switch.



Tap on **Done** when you have finished (the label on the **Done** button changes to **Edit**).


To delete one or more users in your list, or to disable or enable all camera sharing at once, tap on the **Edit** button and then tap on the desired button at the bottom of the screen.

Seeing other users' cameras



Tap on these icons to toggle between your camera lists. The Shared cameras list shows the cameras of other users have shared with you.

Activate motion detection for alerts

Your CamLIGHT has a built-in motion detector that records if movement is detected by the camera. The number of occurrences is indicated on the My Cameras screen. To activate motion detection, tap on  → Settings → tap **ON/OFF** to enable or disable motion detection.

CamLIGHT settings

Tap on **More** in the main screen for additional options:

- | | |
|------------------------|--|
| Logout | Clears your local user data. You must login again to use your camera |
| Change Password | Enables you to change your current password. |
| Update check | Checks online for the latest application version. |

Technical specifications

Hardware

Input power	LED bulb, 100-240V, E27 socket, 7W (40 W equivalent)
Network	WiFi b/g/n (WEP/WPA)
Dimensions	H 14 cm (5.5 in.), Ø 120 mm (4.7 in.)
Weight	Approximately 700 g (25 oz.)
Video	720p, 8x digital zoom, H.264, up to 25 fps, 400 Kbps max bit rate, field of view 90° vert, 360° horiz., automatic infrared night vision (10 m), motion detection
Audio	2-way, built-in mic and speaker (off by default to protect privacy)
Supported devices	Android 4.3 or higher smartphone / 3.0 or higher tablet. iOS 4.3 or higher, iPhone, iPad, or iPod touch
Memory	Micro SD card up to 32 GB (approximately 130 MB/hr)

Environmental

Operating conditions	0° to +35°c 10% to 85% RH (no condensation)
Storage conditions	-10° to +60°c 5% to 90% RH (no condensation)
Consumption	15 W max

Troubleshooting

I can't sign up for the service or access my CamLIGHT

Check that your smartphone or tablet is configured to use your local WiFi network. If you are trying to access your CamLIGHT from a remote location, make sure that your mobile device has Internet access.

My CamLIGHT didn't connect to my home WiFi network

Make sure that your CamLIGHT is within wireless range of your network router, and repeat the initial setup procedure described earlier in **Getting Started**.

No video image appears on my screen

Check to make sure your CamLIGHT is accessible from the software by checking under **Settings** to see if it is **Online**.

I can't use the Replay feature with my camera

Make sure you have installed a micro SD memory card (up to 32 GB) in your CamLIGHT product.

How can I switch my CamLIGHT to another WiFi network?

Under **Settings** → **QR code scan**, choose another network, enter the password, and follow the on-screen instructions.

How do I reset the WiFi on my CamLIGHT?

Press and hold the button on your product for more 10 seconds. This completely clears your WiFi configuration.

Do I have to use my smartphone to turn the light on/off?

A short-press on the bulb's button also turns the light on and off.